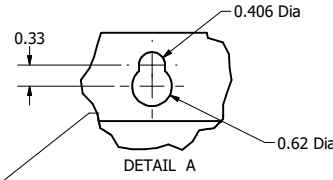
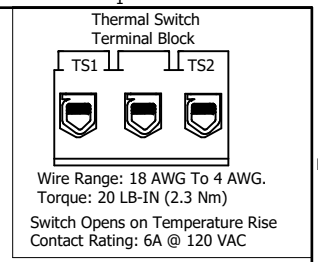


SineWave Part Number	Schematic Drawing#	Approx Weight (LBS)
KMG35A01A	24281-1A	139
KMG35A01P	24281-1P	140

HorsePower (HP)	kVar	Max Amps	Voltage (V)	HZ	Phase
25	3	35	480	60	3



D

D

C

C

B

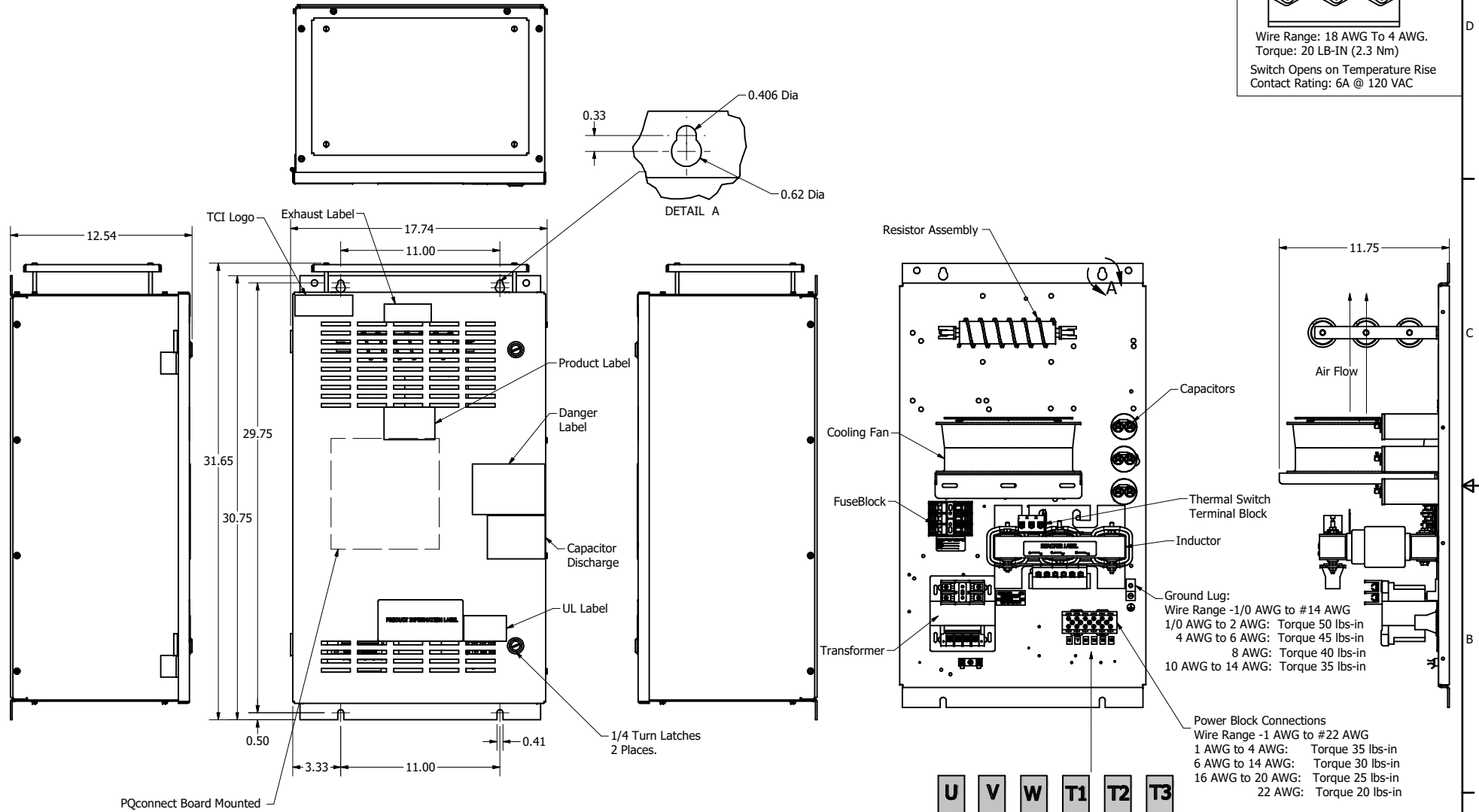
B

A

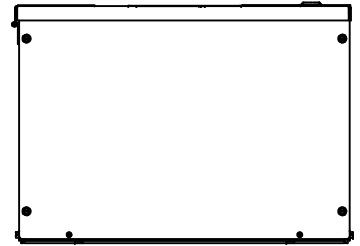
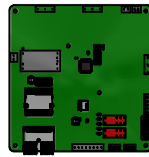
A

A

A



PQconnect Board Mounted On Inside Front Door. OPTIONAL



U V W T1 T2 T3

Ground Lug:
Wire Range -1/0 AWG to #14 AWG
1/0 AWG to 2 AWG: Torque 50 lbs-in
4 AWG to 6 AWG: Torque 45 lbs-in
8 AWG: Torque 40 lbs-in
10 AWG to 14 AWG: Torque 35 lbs-in

Power Block Connections
Wire Range -1 AWG to #22 AWG
1 AWG to 4 AWG: Torque 35 lbs-in
6 AWG to 14 AWG: Torque 30 lbs-in
16 AWG to 20 AWG: Torque 25 lbs-in
22 AWG: Torque 20 lbs-in

Customer Is Responsible For Installation to Meet All National And Local Electrical Codes.

Material(s) Shall be RoHS Compliant

TCI, LLC CLAIMS PROPRIETARY RIGHTS IN THE MATERIAL HEREIN DISCLOSED. IT IS SUPPLIED WITHOUT PREJUDICE TO ANY PATENT RIGHTS OF TCI AND MAY NOT BE REPRODUCED OR USED TO MANUFACTURE ANYTHING SHOWN THEREIN WITHOUT WRITTEN PERMISSION FROM TCI.					TOLERANCES (EXCEPT AS NOTED)	W132 N10611 Grant Drive Germantown, WI 53022 KMG35A01-, SineWave Filter Enclosed Type 1, 25HP, 480V 104353DG DATE 10/07/2014 SCALE 1/8 SHT 1 OF 1
					DECIMAL	
					.XX ± .25 .XXX ± .10	
					FRACTIONAL	
	C	Add PQconnect Board	6/17/2020	DSW	± 1/16	
	NO	REVISION	DATE	BY	± 1"	

4

1

3

A

2

1

1